

臺灣印刷探索館營運情形人數月報統計表

年月	106/1	106/2	106/3	106/4	106/5	106/6	106/7	106/8	106/9	106/10	106/11	106/12
總人數	976	922	1,204	1,115	559	441	1,845	1,558	521	844	972	746
年月	105/1	105/2	105/3	105/4	105/5	105/6	105/7	105/8	105/9	105/10	105/11	105/12
總人數	1,709	1,431	692	1,079	1,024	1,313	2,274	1,631	452	842	1,212	674
年月	104/1	104/2	104/3	104/4	104/5	104/6	104/7	104/8	104/9	104/10	104/11	104/12
總人數	755	840	274	478	502	1,308	2,516	3,046	519	1,201	1,133	266

106年總計

11,703

105年總計

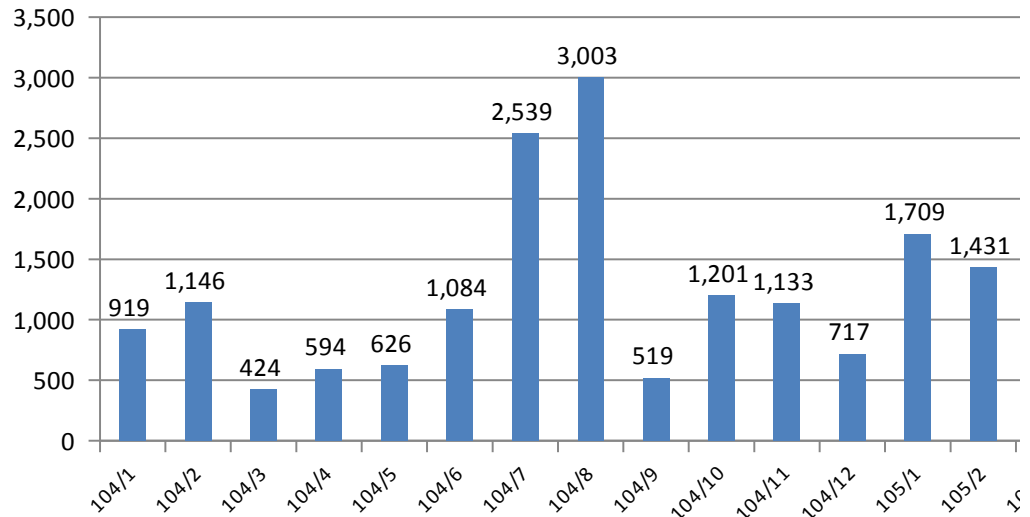
14,333

104年總計

12,838

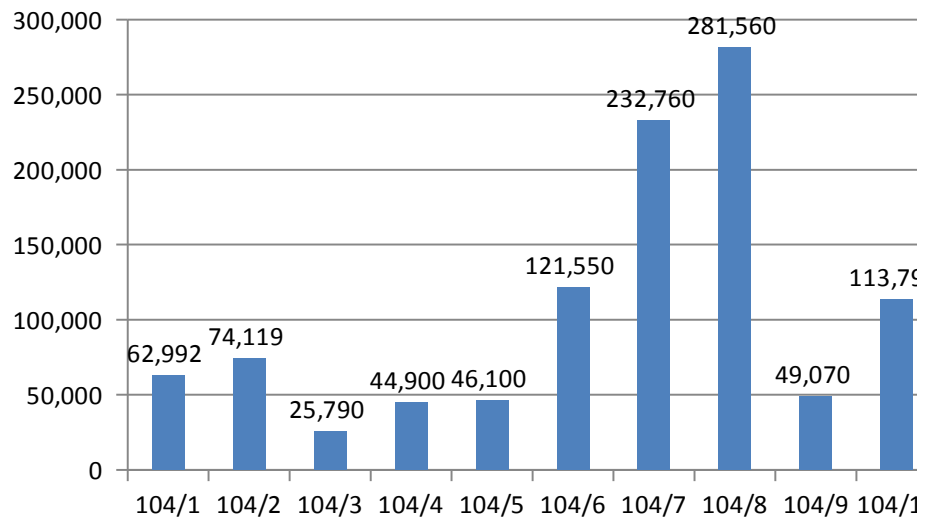
104/1	104/2	104/3	104/4	104/5	104/6	104/7	104/8	104/9
919	1,146	424	594	626	1,084	2,539	3,003	519

104 年 1 月至 105 年 3 月遊客人數統計圖



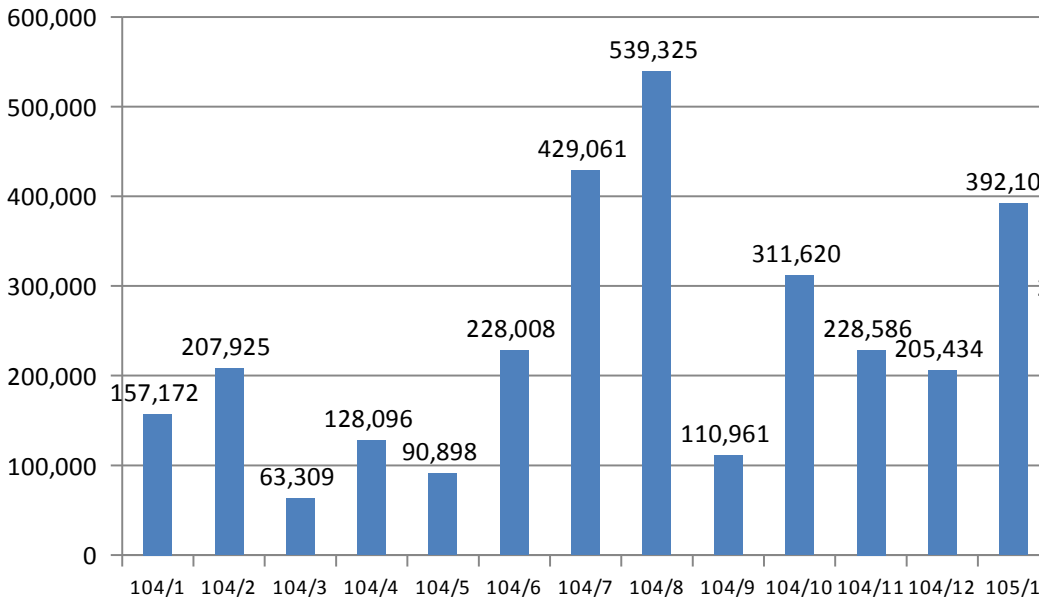
104/1	104/2	104/3	104/4	104/5	104/6	104/7	104/8	104/9
62,992	74,119	25,790	44,900	46,100	121,550	232,760	281,560	49,070

104 年 1 月至 105 年 3 月門票收入統計



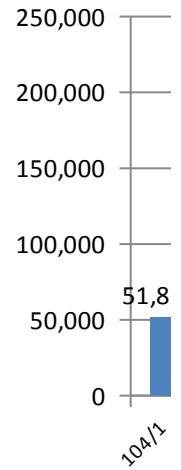
104/1	104/2	104/3	104/4	104/5	104/6	104/7	104/8	104/9
157,172	207,925	63,309	128,096	90,898	228,008	429,061	539,325	110,961

104 年 1 月至 105 年 3 月總營業額統計圖



104/10	104/11	104/12	105/1	105/2	105/3
1,201	1,133	717	1,709	1,431	692

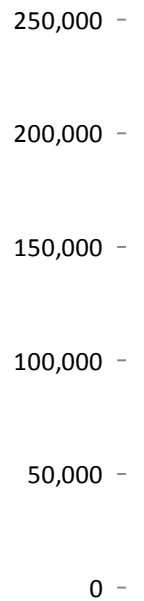
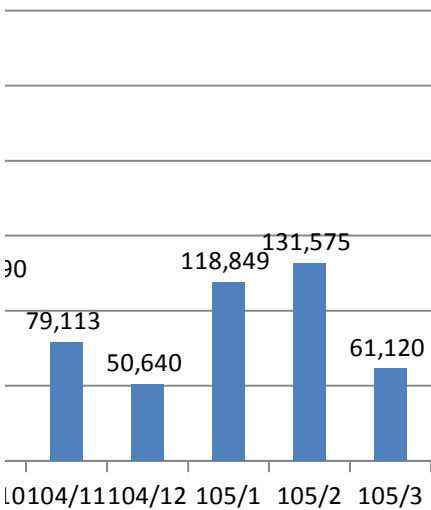
104/1	104/2
51,820	51,788



104/10	104/11	104/12	105/1	105/2	105/3
113,790	79,113	50,640	118,849	131,575	61,120

104/1	104/2
71,841	121,113

圖

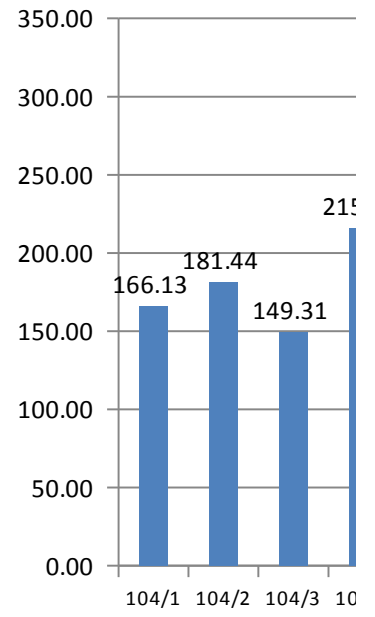
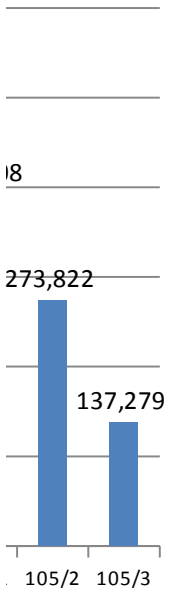


104/10	104/11	104/12	105/1	105/2	105/3
311,620	228,586	205,434	392,108	273,822	137,279

104/1	104/2
-------	-------

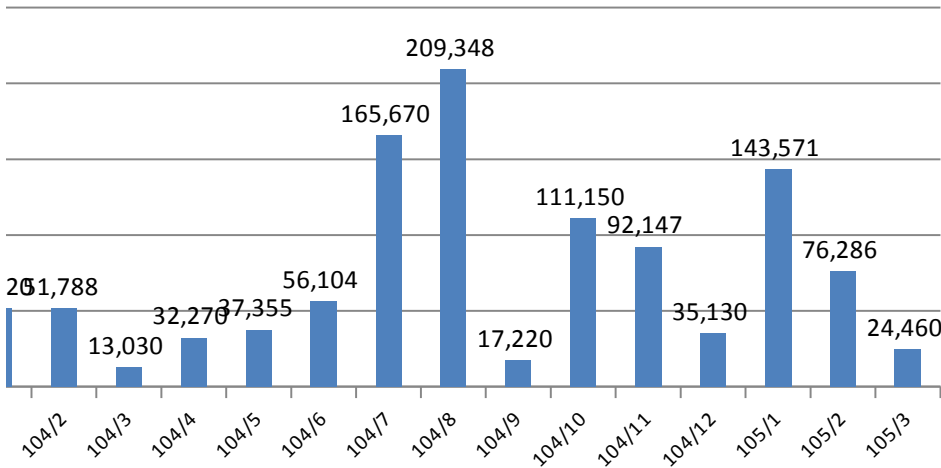
166.13	181.44
--------	--------

104 年



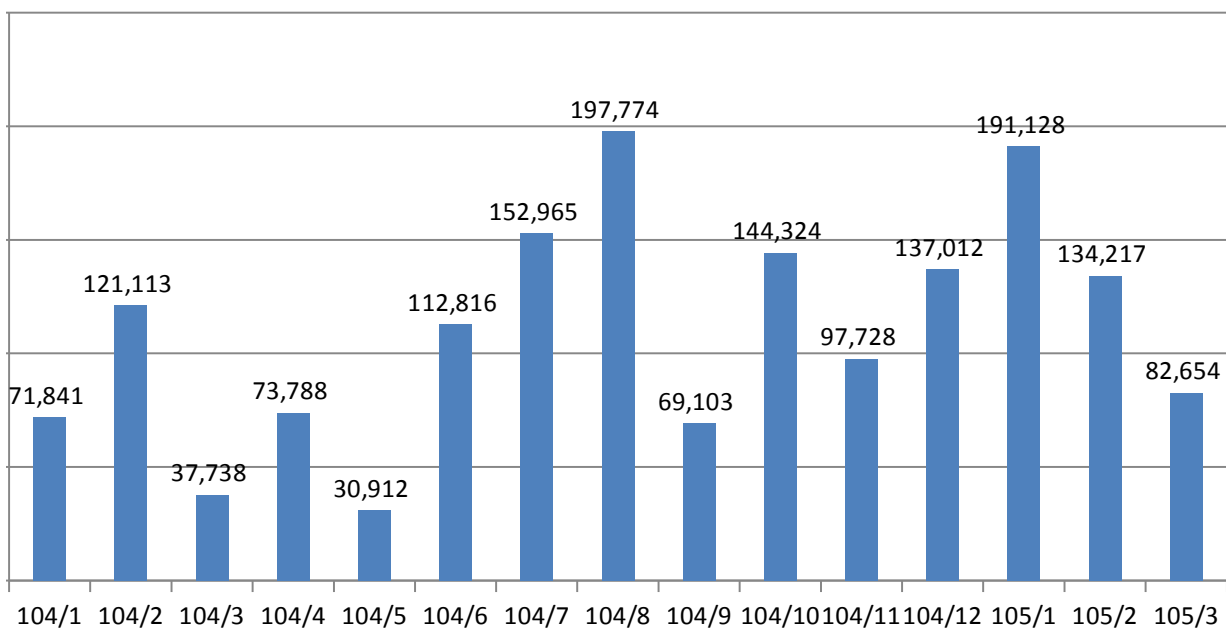
104/3	104/4	104/5	104/6	104/7	104/8	104/9	104/10	104/11
13,030	32,270	37,355	56,104	165,670	209,348	17,220	111,150	92,147

104年1月至105年3月DIY收入統計圖



104/3	104/4	104/5	104/6	104/7	104/8	104/9	104/10	104/11
37,738	73,788	30,912	112,816	152,965	197,774	69,103	144,324	97,728

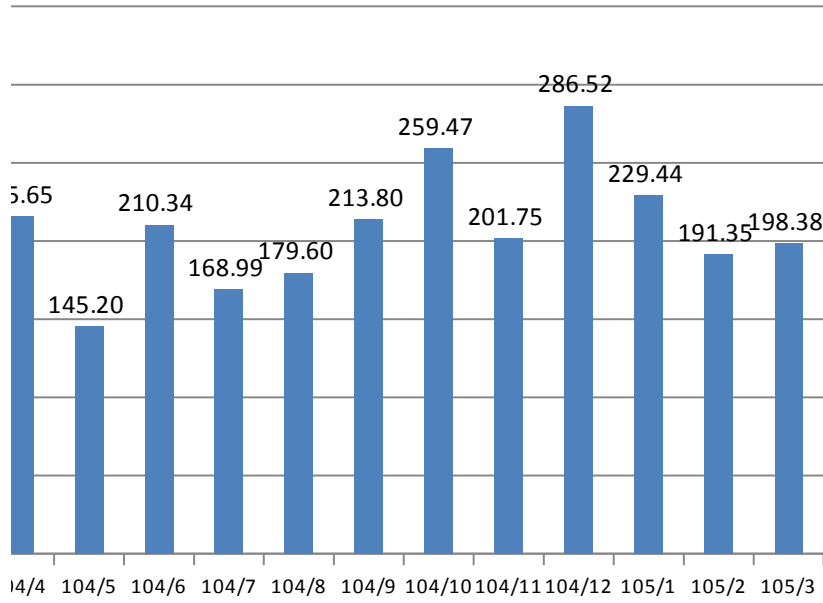
104年1月至105年3月商品收入統計圖



104/3	104/4	104/5	104/6	104/7	104/8	104/9	104/10	104/11
-------	-------	-------	-------	-------	-------	-------	--------	--------

149.31	215.65	145.20	210.34	168.99	179.60	213.80	259.47	201.75
--------	--------	--------	--------	--------	--------	--------	--------	--------

1 月至 105 年 3 月遊客消費單價統計圖



104/12	105/1	105/2	105/3
35,130	143,571	76,286	24,460

104/12	105/1	105/2	105/3
137,012	191,128	134,217	82,654

104/12	105/1	105/2	105/3
--------	-------	-------	-------

286.52	229.44	191.35	198.38
--------	--------	--------	--------

月份/元	門票收入	DIY收入	商品收入	總收入（折抵後）
105/7	208,948	176,707	185,736	464,592
104/7	232,760	165,670	152,965	429,061
成長率	-10.23%	6.66%	21.42%	8.28%

年別
105年
104年
成長率

月份/元	門票收入	DIY收入	商品收入	總收入（折抵後）
105/8	135,530	105,720	315,455	486,258
104/8	281,560	209,348	197,774	539,325
成長率	-51.86%	-49.50%	59.50%	-9.84%

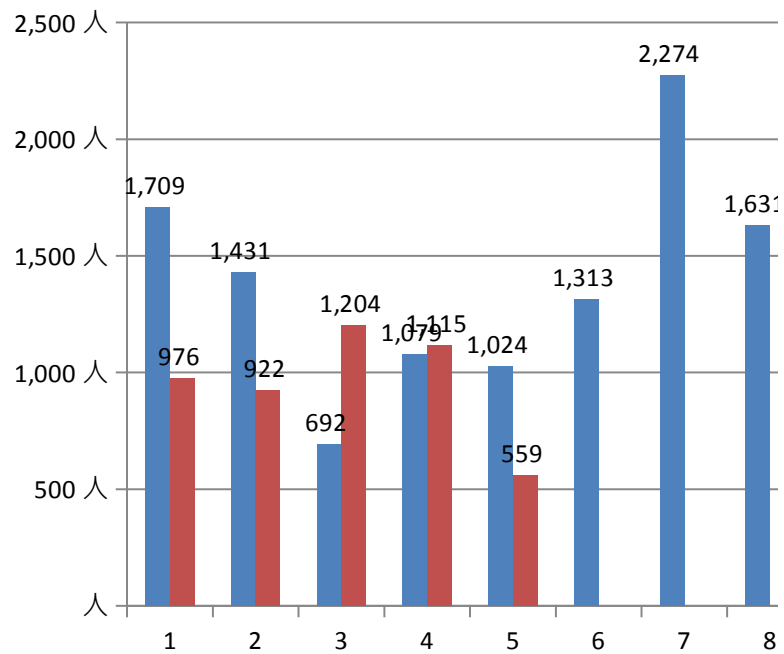
參觀人數(人)	門票收入(元)	DIY收入(元)	門票+DIY(元)	商品收入(元)
14,333	1,175,655	1,084,555	2,260,210	1,615,163
13,290	1,182,384	869,662	2,052,046	1,219,188
7.85%	-0.57%	24.71%	10.14%	32.48%

總收入(元) (折抵後)	台酒商品
3,273,350	428,323
2,695,895	251,047
21.42%	70.61%

975	1,431	692	1,079	1,024	1,313	2,274	1,631
104/1	104/2	104/3	104/4	104/5	104/6	104/7	104/8
755	840	274	478	502	1,308	2,517	3,046
29.14%	70.36%	152.55%	125.73%	103.98%	0.38%	-9.65%	-46.45%

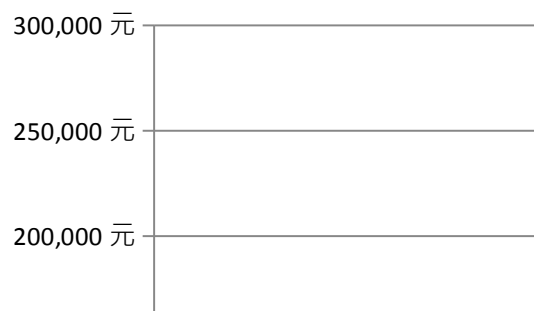
1月

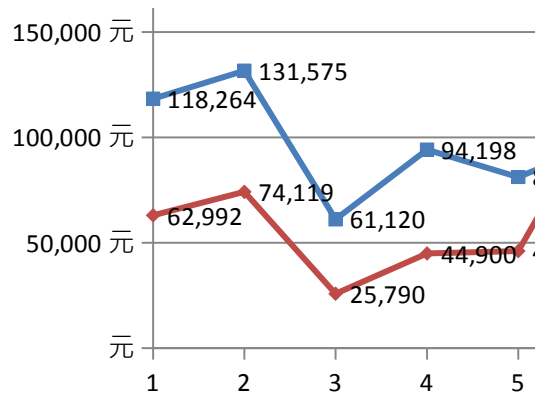
1,709	1,431	692	1,079	1,024	1,313	2,274	1,631
976	922	1,204	1,115	559			



門票收入	年月	105/1	105/2	105/3	105/4	105/5	105/6
	金額(元)	118,264	131,575	61,120	94,198		
	年月	104/1	104/2	104/3	104/4	104/5	104/6
	金額(元)	62,992	74,119	25,790	44,900	46,100	121,550

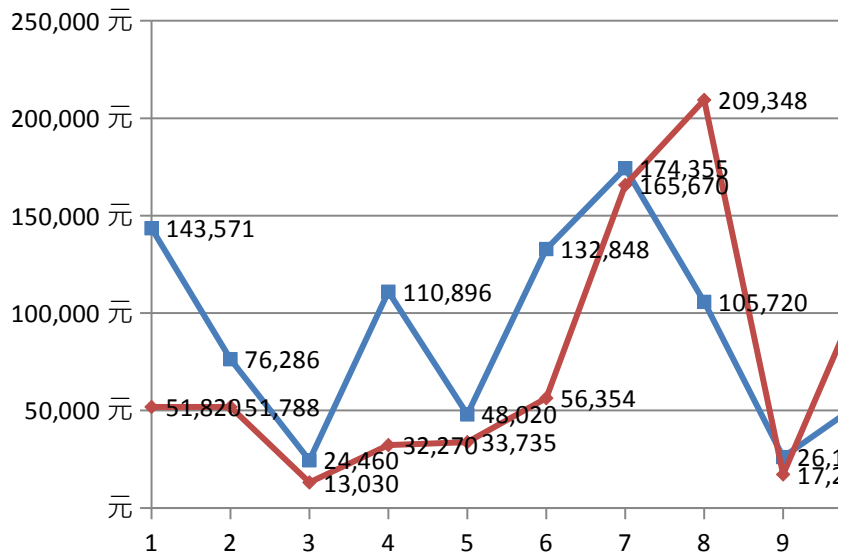
118,264	131,575	61,120	94,198	81,181	98,964	211,300
62,992	74,119	25,790	44,900	46,100	121,550	232,760





DIY 收入	年月	105/1	105/2	105/3	105/4	105/5	105/6
	金額(元)	143,571	76,286	24,460	116,523		
	年月	104/1	104/2	104/3	104/4	104/5	104/6
	金額(元)	51,820	51,788	13,030	32,270	37,355	56,104

143,571	76,286	24,460	110,896	48,020	132,848	174,355
51,820	51,788	13,030	32,270	33,735	56,354	165,670

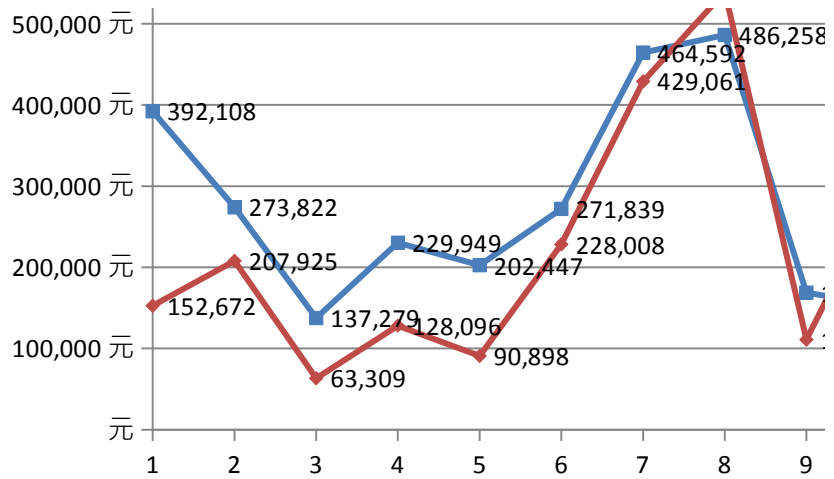


總營業額(扣 除折抵)	年月	105/1	105/2	105/3	105/4	105/5	105/6
	金額(元)	392,108	273,822	137,279	229,949		
	年月	104/1	104/2	104/3	104/4	104/5	104/6
	金額(元)	152,672	207,925	63,309	128,096	90,898	228,008

392,108	273,822	137,279	229,949	202,447	271,839	464,592
152,672	207,925	63,309	128,096	90,898	228,008	429,061

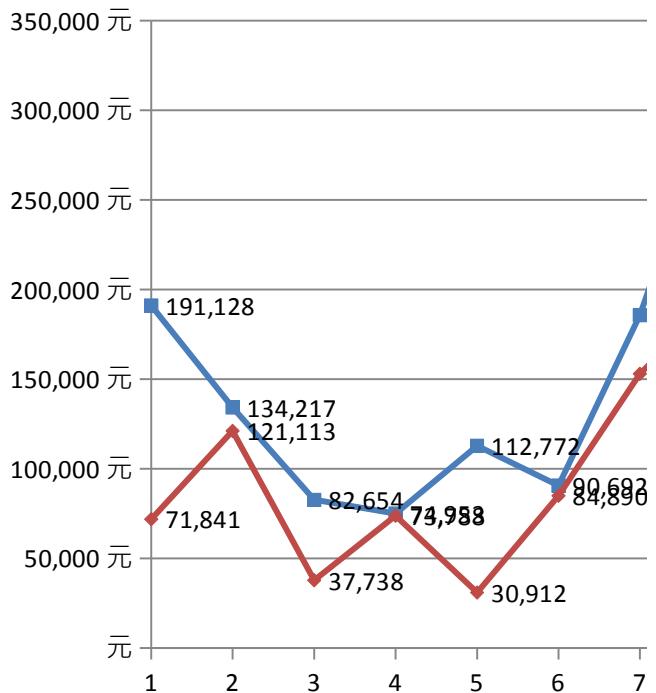
600,000 元

▲ 539,325



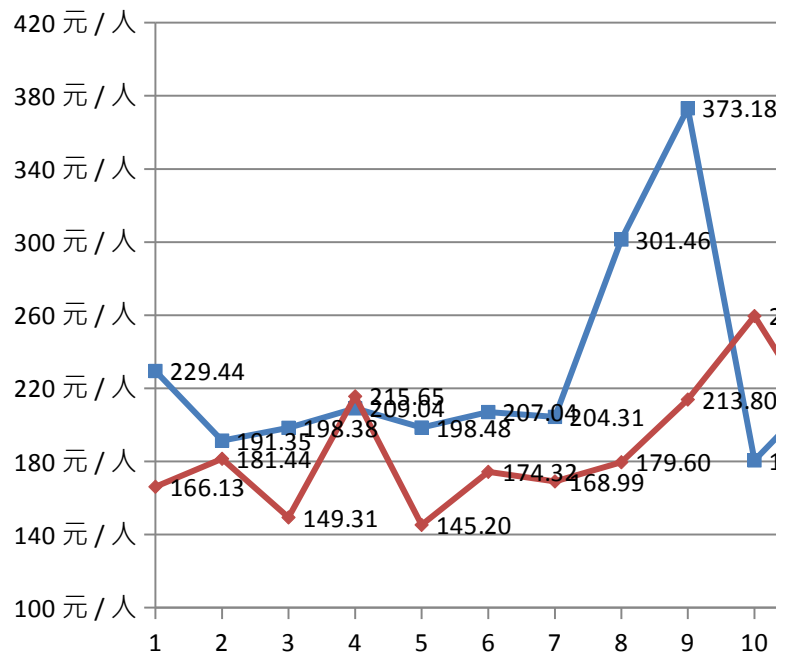
商品收入	年月	105/1	105/2	105/3	105/4	105/5	105/6
	金額(元)	191,128	134,217	82,654	71,680	112,772	90,692
	年月	104/1	104/2	104/3	104/4	104/5	104/6
	金額(元)	71,841	121,113	37,738	73,788	30,912	112,816

191,128	134,217	82,654	74,953	112,772	90,692	185,736
71,841	121,113	37,738	73,788	30,912	84,890	152,965



遊客消費單價年月	105/1	105/2	105/3	105/4	105/5	105/6
金額(元)	229.44	191.35	198.38	209.04	198.48	207.04
年月	104/1	104/2	104/3	104/4	104/5	104/6
金額(元)	166.13	181.44	149.31	215.65	145.20	174.32

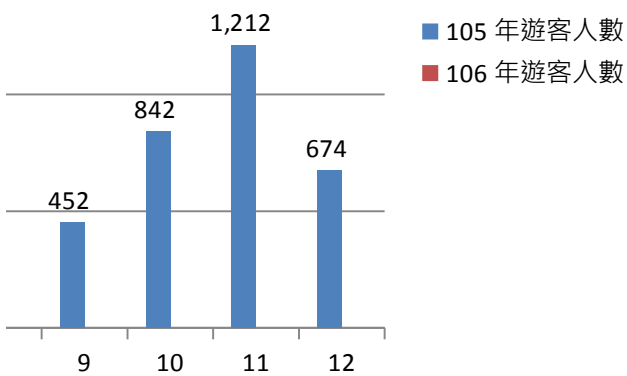
229.44	191.35	198.38	209.04	198.48	207.04	204.31
166.13	181.44	149.31	215.65	145.20	174.32	168.99



452	842	1,212	105/12
104/9	104/10	104/11	
519	1,201	1,133	104/12
-12.91%	-29.89%	6.97%	

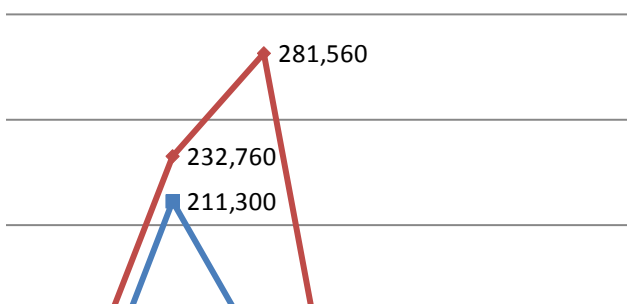
452	842	1,212	674

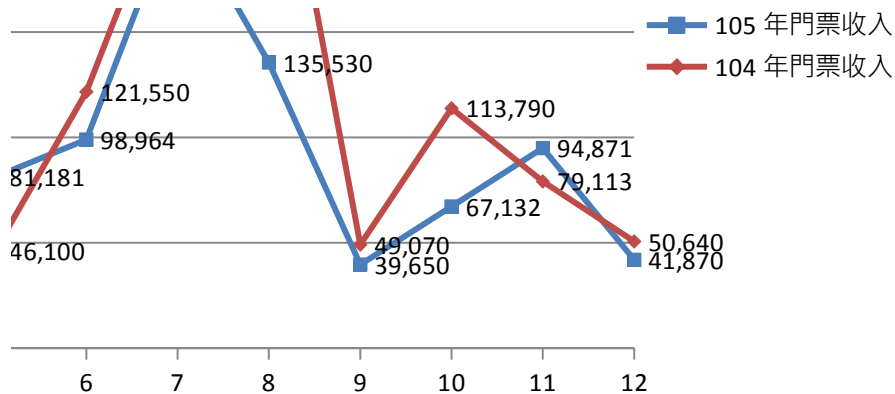
l



105/7	105/8	105/9	105/10	105/11	105/12
104/7	104/8	104/9	104/10	104/11	104/12
232,760	281,560	49,070	113,790	79,113	50,640

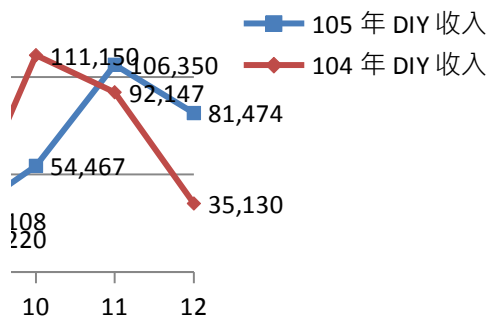
135,530	39,650	67,132	94,871	41870
281,560	49,070	113,790	79,113	50,640





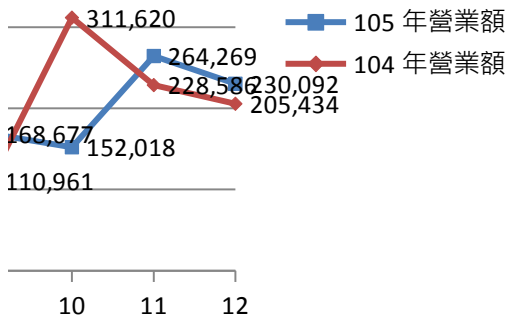
105/7	105/8	105/9	105/10	105/11	105/12
104/7	104/8	104/9	104/10	104/11	104/12
165,670	209,348	17,220	111,150	92,147	35,130

105,720	26,108	54,467	106,350	81474
209,348	17,220	111,150	92,147	35,130



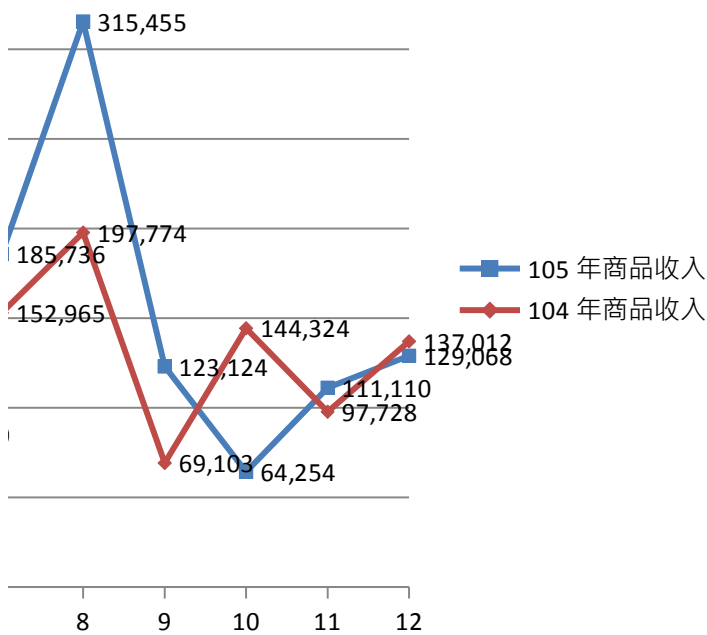
105/7	105/8	105/9	105/10	105/11	105/12
104/7	104/8	104/9	104/10	104/11	104/12
429,061	539,325	110,961	311,620	228,586	205,434

486,258	168,677	152,018	264,269	230092
539,325	110,961	311,620	228,586	205,434



105/7	105/8	105/9	105/10	105/11	105/12	105年總計
						683,143
104/7	104/8	104/9	104/10	104/11	104/12	104年總計
152,965	197,774	69,103	144,324	97,728	137,012	1,247,114

315,455	123,124	64,254	111,110	129068
197,774	69,103	144,324	97,728	137,012



105/7	105/8	105/9	105/10	105/11	105/12
104/7	104/8	104/9	104/10	104/11	104/12
168.99	179.60	213.80	259.47	201.75	286.52

301.46	373.18	180.54	218.04	341.38
179.60	213.80	259.47	201.75	286.52

